

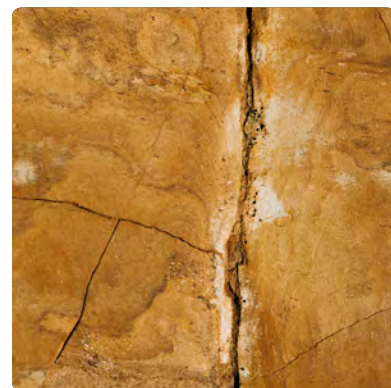
HOW TO CLEAN A HARDSCAPE

When a homeowner or business owner invests in hardscaping, it can be easy to fall into the trap of thinking this new, permanent feature won't require the same kind of care and attention as the rest of their landscape.

But even things made of stone, concrete and other hard materials need care. We hate to see hardscaped areas become stained, cracked, or otherwise damaged when some simple maintenance steps could have prevented these issues. Don't put your treasured guests or visitors at risk of injury from a poorly maintained hardscape feature. Follow these steps to keep your hardscape well cleaned and maintained:

Cracks

Even the smallest crack or chip can turn into a big problem if ignored. Freeze-thaw cycles in our harsh northeast winters can quickly transform these small annoyances into a big problem that requires expensive repair or replacement. Cracked or broken pavers, stones or bricks should be removed and replaced. You can use a textured caulk or pourable concrete grout to repair concrete, or talk with a professional landscaper like Hively about sealing options that are available for your situation.

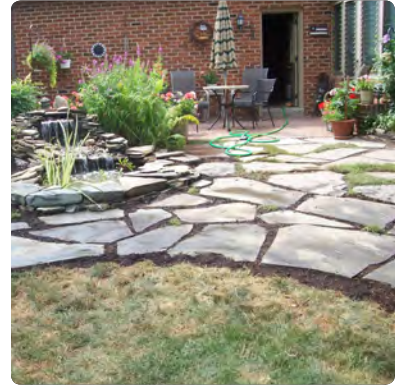


Dirt and Debris

One of the easiest ways to keep your hardscape looking its best is by keeping it clear of dirt and debris. Regularly sweep to remove all dirt and debris, and pay special attention in the fall when leaves and other waste begins to litter the ground. Left unattended, these leaves can begin to decompose directly on your pathway, and leave behind an ugly stain or mold. Give it a good wash with a hose or pressure washer (when the surface allows, and carefully!) to eliminate stains.

Moss, Mold, Mildew and Algae

The best way to avoid moss, mold, mildew and algae is to prevent them from forming. These annoyances thrive in damp, shaded areas, so make your lawn sprinklers don't hit your hardscaping, and be careful when hand watering. In shaded areas, see if you can prune trees to allow more direct sunlight. If mold, mildew or algae have already formed, purchase a cleaner or mix a solution of one part bleach to ten parts water. Apply the solution with a spray bottle or mop and wait 10 minutes, then use a stiff brush and hose sprayer or pressure washer to dislodge what's left.



Sealing and Jointing Sand

Any missing or loose jointing sand will need replaced. Professional sealing can freshen up your hardscape's appearance and can help restore its original look. It will also be easier to maintain in the future.



Weeds

As weeds appear in your path you'll want to remove them at the root level. If you find that a spot becomes a consistent problem, clean the area and fill it with a jointing sand or mortar.

These simple maintenance tasks will allow you to enjoy your hardscaping year after year. If you have questions or want to call in a backup team, be sure to give the professional hardscapers at Hively a call!

LANDSCAPE

HARDSCAPE

MAINTENANCE